

**LEVEL 1  
UNITS 1 TO 25 INCLUSIVE**

REGISTERED IN THE LAND REGISTRY OFFICE FOR THE LAND TITLES  
DIVISION OF MUSKOKA (No. 35) AT 15:44 O'CLOCK  
ON THE 11<sup>TH</sup> DAY OF FEBRUARY 2015

*Mary Chasse*  
REPRESENTATIVE FOR THE LAND REGISTRAR  
FOR THE LAND TITLES DIVISION OF MUSKOKA (#35)

**SURVEYOR'S CERTIFICATE**

I CERTIFY THAT:

- THIS SURVEY AND PLAN ARE CORRECT AND IN ACCORDANCE WITH THE CONDOMINIUM ACT, 1998, THE SURVEYS ACT, THE SURVEYORS ACT AND THE LAND TITLES ACT AND THE REGULATIONS MADE UNDER THEM.
- THE SURVEY WAS COMPLETED ON THE 4<sup>TH</sup> DAY OF OCTOBER, 2013.

*R. C. Thaler*  
ROBERT C. THALER  
ONTARIO LAND SURVEYOR

DECLARATION REGISTERED AS No. MT149161

THIS PLAN COMPRISES ALL OF PIN 48078-0451

**SCHEDULE OF APPURTENANT AND SERMENT INTERESTS**  
(PURSUANT TO CLAUSES 15(1) (d) AND (e) OF THE CONDOMINIUM ACT, 1998)

TOGETHER WITH (APPURTENANT INTERESTS)	LOCATION	DESCRIBED IN	NOTES
	GRANITE DRIVE REGISTERED PLAN 35M-655	TOGETHER WITH INTEREST AS IN MTS1593	N/A
SUBJECT TO (SERMENT INTERESTS)	COMMON ELEMENTS AND PARTS 2 TO 28 (INCL.) PLAN 35R-24623	IN DECLARATION	PART OF UNITS 1 TO 17 (INCL.) UNITS 19 TO 21 (INCL.) UNITS 24 & 25

**CERTIFICATE OF DECLARANT**

THIS IS TO CERTIFY THAT THE PROPERTY INCLUDED IN THIS PLAN HAS BEEN LAID OUT INTO UNITS AND COMMON ELEMENTS IN ACCORDANCE WITH MY INSTRUCTIONS

DECLARANT: 1650258 ONTARIO INC.

DATED AT BRACEBRIDGE  
THIS 17<sup>TH</sup> DAY OF DECEMBER 2014.

*Gregory Paul Knight*  
GREGORY PAUL KNIGHT  
I HAVE THE AUTHORITY TO BIND THE CORPORATION

**CERTIFICATE OF PLANNING ACT APPROVAL**

PART 1 APPROVED AND PART 2, 3 and 4 EXEMPTED UNDER SECTION 50 OF THE CONDOMINIUM ACT, R.S.O. 1990, c. 28, AS AMENDED AND SECTION 51 OF THE PLANNING ACT R.S.O. 1990, c. P. 13, AS AMENDED

THIS 26<sup>TH</sup> DAY OF JANUARY 2015

*Samantha Hastings*  
SAMANTHA HASTINGS  
COMMISSIONER OF PLANNING AND ECONOMIC DEVELOPMENT  
THE DISTRICT MUNICIPALITY OF MUSKOKA

**INDEX OF PARTS**

PART	SHEET(S)	DESCRIPTION
1	1	PLAN OF SURVEY OF THE CONDOMINIUM PROPERTY, THE ILLUSTRATION OF THE APPURTENANT AND SERMENT INTERESTS AND THE DESIGNATION OF UNITS ON LEVEL 1
2	NIL	EXCLUSIVE USE
3	NIL	ARCHITECTURAL PLANS
4	NIL	STRUCTURAL PLANS

**NOTES AND LEGEND**

**LEGEND**

- DENOTES SURVEY MONUMENT FOUND
- DENOTES SURVEY MONUMENT SET
- ▬ DENOTES STANDARD IRON BAR (25mm SQ. x 1.2m LONG)
- ▬ DENOTES SHORT STANDARD IRON BAR (25mm SQ. x 0.6m LONG)
- ▬ DENOTES IRON BAR (16mm SQ. x 0.6m LONG)
- ▬ DENOTES ROCK POST (16mm# METAL SHAFT IN BEDROCK & ALUMINUM CAP)
- ▬ DENOTES IRON TUBE
- IT DENOTES K.I. BEACON O.L.S.
- (O&S) DENOTES DEARDEN, STANTON, STONES AND STRONGMAN O.L.S.
- (F&B) DENOTES FITZMAURICE AND BOYER O.L.S.
- (E.J.) DENOTES J. E. JACKSON O.L.S.
- (R.C.T.) DENOTES ROBERT C. THALER O.L.S.
- (A) DENOTES ARC LENGTH
- (WT) DENOTES WITNESS MONUMENT
- (P) DENOTES REGISTERED PLAN 35M-655
- C DENOTES CHORD BEARING AND DISTANCE
- R DENOTES CURVE RADIUS

**MONUMENTS IDENTIFICATION**

ALL FOUND MONUMENTATION IS BY ROBERT C. THALER SURVEYING LTD. (1563) UNLESS OTHERWISE NOTED.

**DISTANCES AND COORDINATES**

DISTANCES AND COORDINATES ARE IN METRES AND CAN BE CONVERTED TO FEET BY DIVIDING BY 0.3048

DISTANCES ON THIS PLAN ARE HORIZONTAL GROUND DISTANCES AND CAN BE CONVERTED TO GRID DISTANCES BY MULTIPLYING BY A COMBINED SCALE FACTOR OF 0.99982

**UNIT BOUNDARY DEFINITIONS**

MONUMENTS CONTROLLING THE EXTENT AND LOCATION OF THE UNITS ARE THE SURVEY MONUMENTS, AS MORE PARTICULARLY DESCRIBED IN SCHEDULE "C" OF THE DECLARATION. AREAS NOT DESIGNATED AS UNITS ARE COMMON ELEMENTS.

**BEARING REFERENCE**

BEARINGS ARE UTM GRID DERIVED FROM SIMULTANEOUS GPS OBSERVATIONS FROM MONUMENTS "A" TO "B", SHOWN HEREON, USING STATIC GPS AND ARE REFERRED TO THE CENTRAL MERIDIAN OF UTM ZONE 17 (81° W LONGITUDE) NAD83 (CSRS) (1997.0)

**CONVERSION NOTE**

FOR BEARING COMPARISONS, A ROTATION OF 1° 15' 30" COUNTER-CLOCKWISE WAS APPLIED TO REGISTERED PLAN 35M-655 TO CONVERT TO UTM BEARINGS

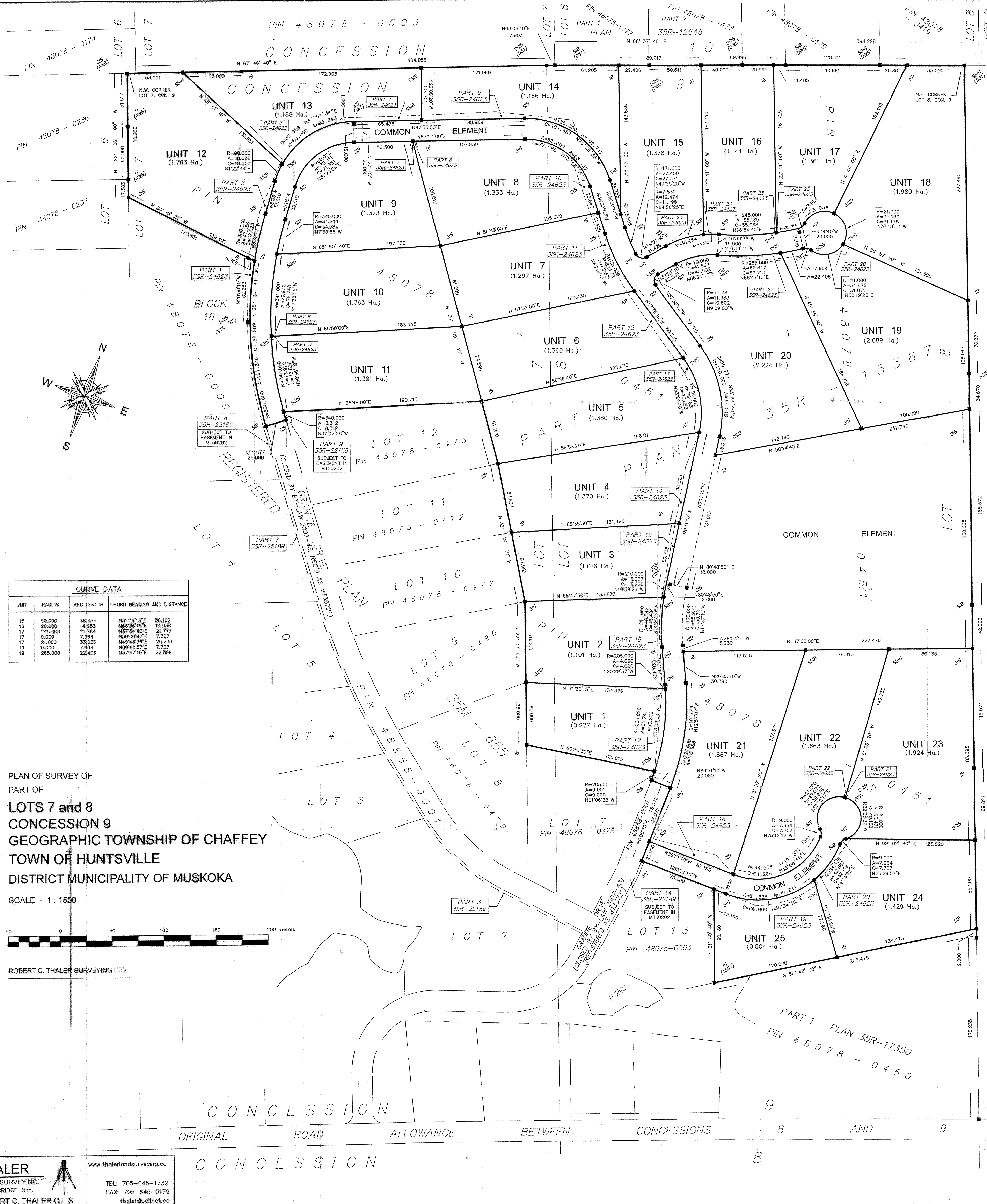
**INTEGRATION TABLE**

OBSERVED REFERENCE POINT	NORTHING	EASTING
A	5027182.145	634696.666
B	5027400.917	633993.611

COORDINATES ARE DERIVED FROM GPS OBSERVATIONS USING THE PRECISE POINT POSITIONING (PPP) SERVICE AND ARE REFERRED TO UTM ZONE 17 (81° W LONGITUDE) NAD83 CSRS (1997.0)

COORDINATE VALUES ARE TO A RURAL ACCURACY IN ACCORDANCE WITH SECTION 14(2) OF THE SURVEYS ACT, R.S.O. 1990, c. 28

COORDINATES CANNOT, IN THEMSELVES, BE USED TO RE-ESTABLISH CORNERS OR BOUNDARIES SHOWN ON THIS PLAN.

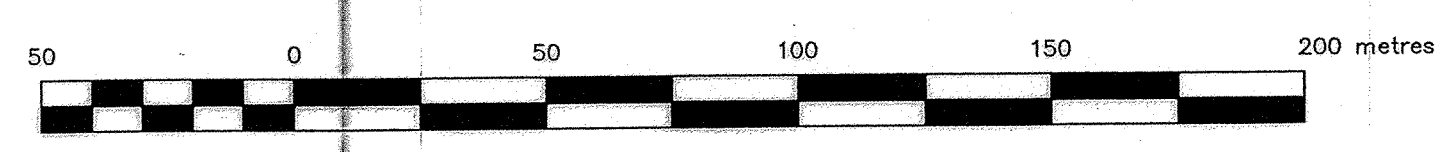


**CURVE DATA**

UNIT	RADIUS	ARC LENGTH	CHORD BEARING AND DISTANCE
15	90.000	38.454	N51°36'15"E 38.162
16	90.000	14.953	N68°38'15"E 14.936
17	245.000	21.784	N57°54'40"E 21.777
18	9.000	7.864	N30°50'42"E 7.797
19	21.000	33.036	N49°43'36"E 29.733
19	9.000	7.864	N80°42'57"E 7.797
19	265.000	22.406	N57°47'10"E 22.399

PLAN OF SURVEY OF  
PART OF  
**LOTS 7 and 8**  
**CONCESSION 9**  
**GEOGRAPHIC TOWNSHIP OF CHAFFEY**  
**TOWN OF HUNTSVILLE**  
**DISTRICT MUNICIPALITY OF MUSKOKA**

SCALE - 1 : 1500



ROBERT C. THALER SURVEYING LTD.

**THALER**  
LAND SURVEYING  
BRACEBRIDGE Ont.  
ROBERT C. THALER O.L.S.

www.thalerlandsurveying.ca  
TEL: 705-645-1732  
FAX: 705-645-5179  
thaler@bellnet.ca

WHEN SHIPPED IN RED INK  
 THIS IS AN OFFICIAL COPY  
 AND MUST NOT BE REMOVED  
 FROM THE REGISTRY OFFICE FILES

0.234

48078

PIN